

DÉCOR

MAGAZINE

ISSUE 9 | 2017 | £7.99 | ESP €8,95

*Bring nature
and a pop
of colour*

INTO YOUR
HOME USING
THE HUMBLE
HOUSEPLANT

ADD
SOME
DETAIL

to your home with this
season's *design trend* of
Moroccan Influence



REFRESH & UPDATE YOUR HOME *with these 5 simply tricks*

DÉCOR is where style lives - the essential design resource for those with a passion for creating beautiful surroundings
For sale across the USA | Canada | Australia | China | Taiwan | Dubai | London | Spain | France | Germany | Switzerland | Scandinavia

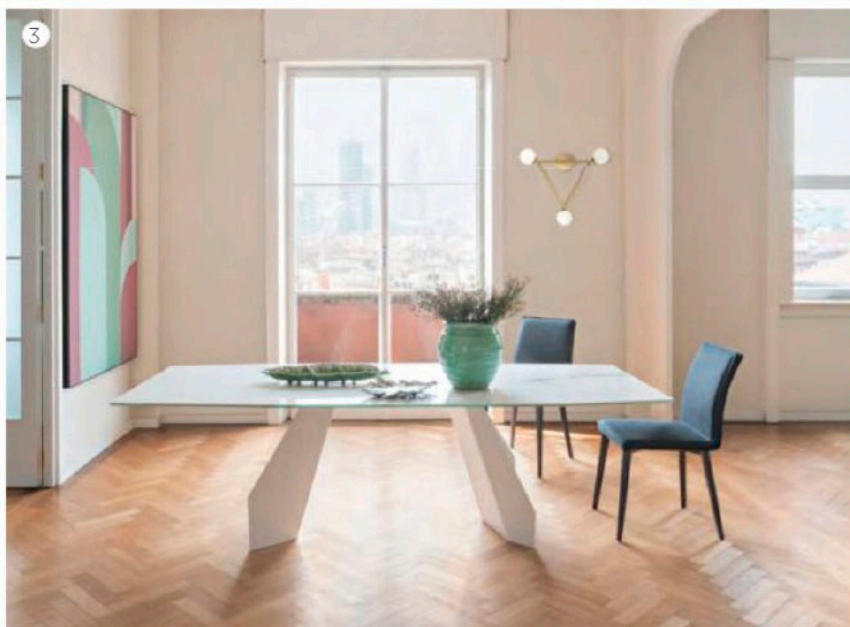
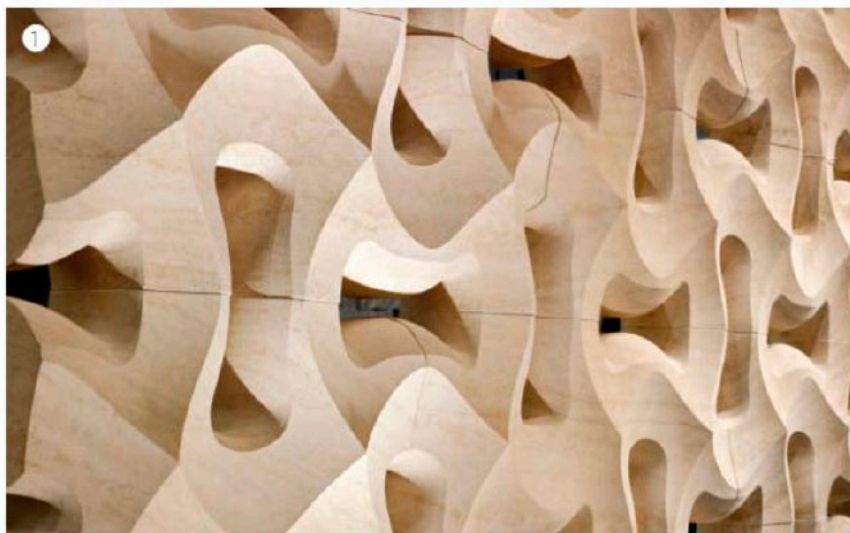
A DESIGN FOR EVERY STAR SIGN

Which style best suits you?

You may believe in them or not, but hands up anyone who doesn't enjoy reading about the characteristics of star signs, comparing them to the traits of people that we know. We had fun linking the 12 star signs to different interior design styles. Do you see yourself in your star sign?

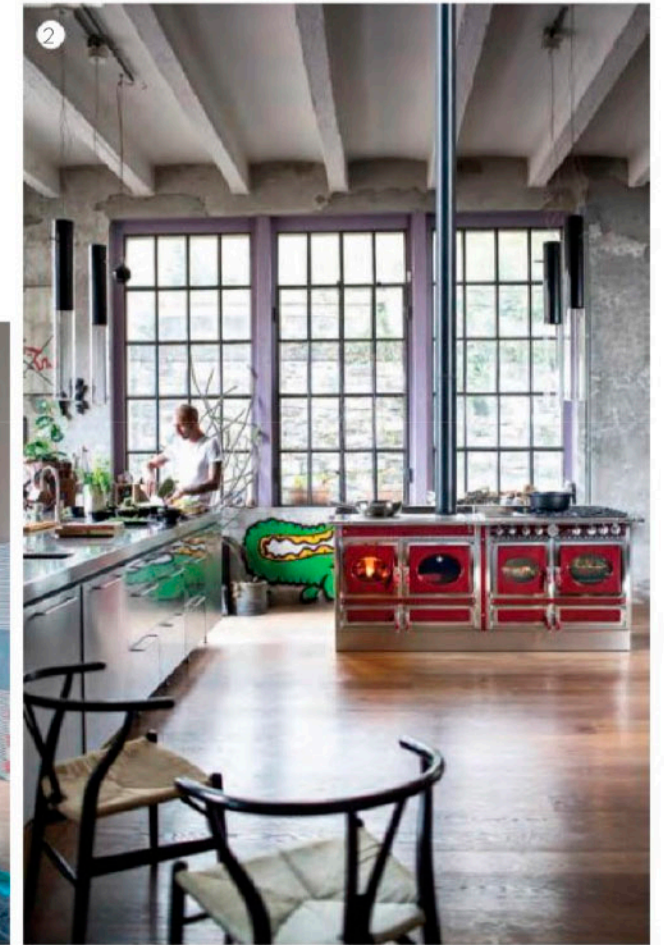
ARIES

Enthusiastic, brave and ready to throw themselves into new adventures, ambitious and with an iron will. Aries are stubborn - oh, and don't make them angry whatever you do: they're impatient, act on instinct and are known for their outbursts.



TAURUS

Kind, friendly and affectionate. They prefer concreteness over fantasy, certainty over uncertainty. Belongings and material possessions are particularly important to them. Sacred places for Taureans include the sofa, where they'd happily sit for hours, and the kitchen, the realm where they can best express their talents.



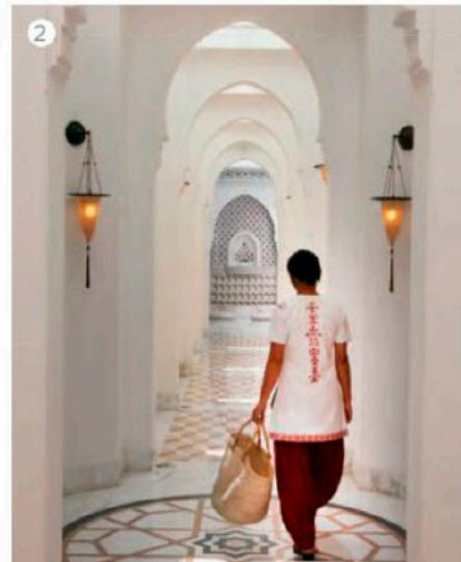
GEMINI

Likeable, inquiring and chatty: Geminis stand out for their intellectual liveliness. They have an inborn talent for transforming themselves: Geminis conceal a thousand different personalities, each one ready to play its part when the time is right.



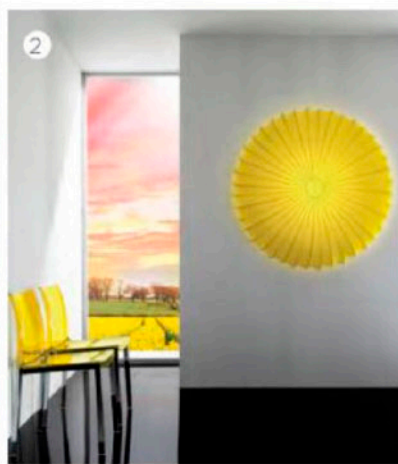
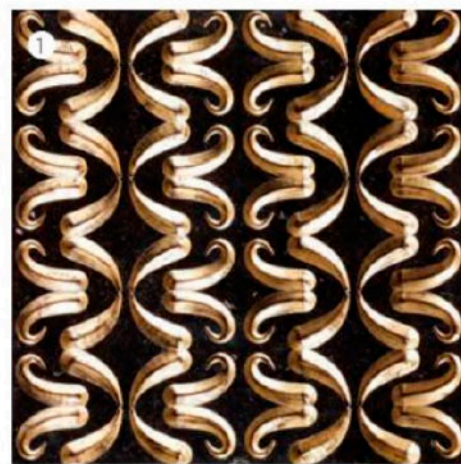
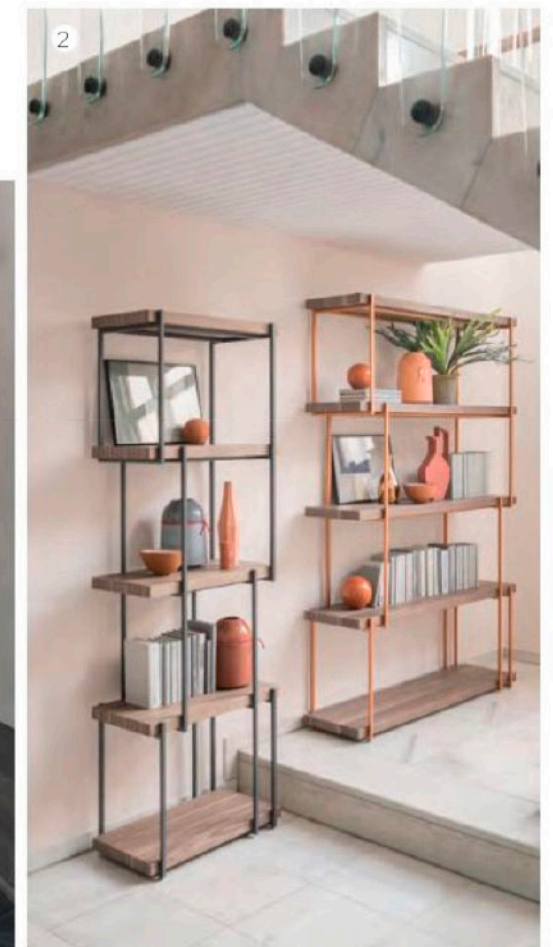
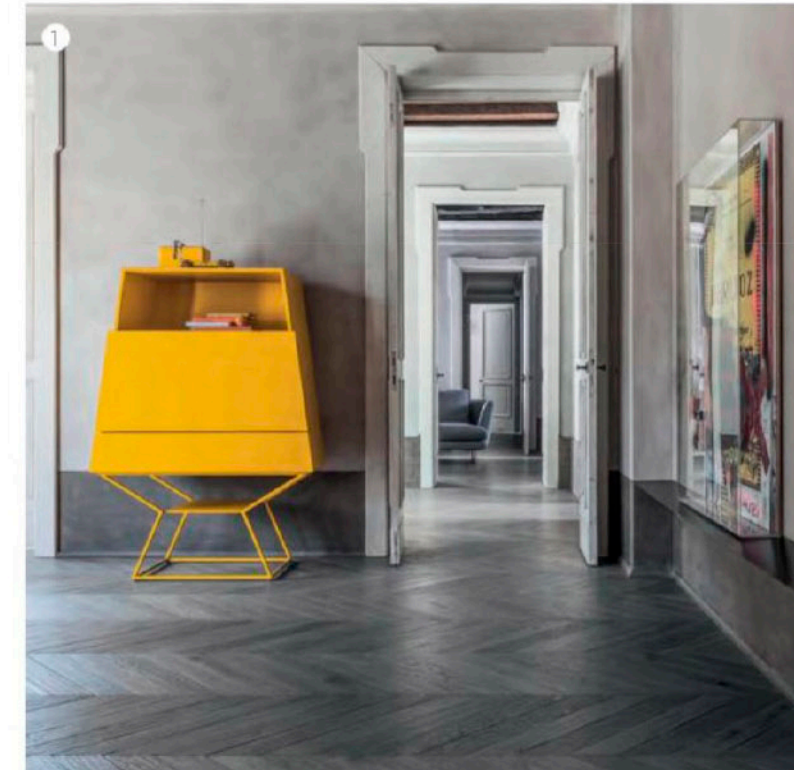
CANCER

Sensitive, sentimental, attractive and reserved. They may appear moody but their defences protect a gentle character with an irresistible emotional nature. What makes them happy? A warm, cosy home, a poetry book and being surrounded by the affection of loved ones.



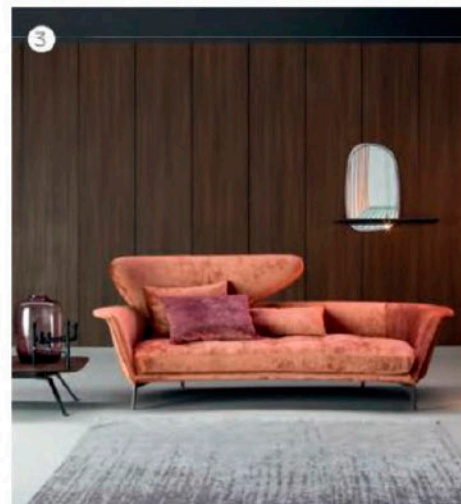
VIRGO

Intelligent, analytical, perfectionists and well-organised, Virgos always manage to find the solution to any practical problem.



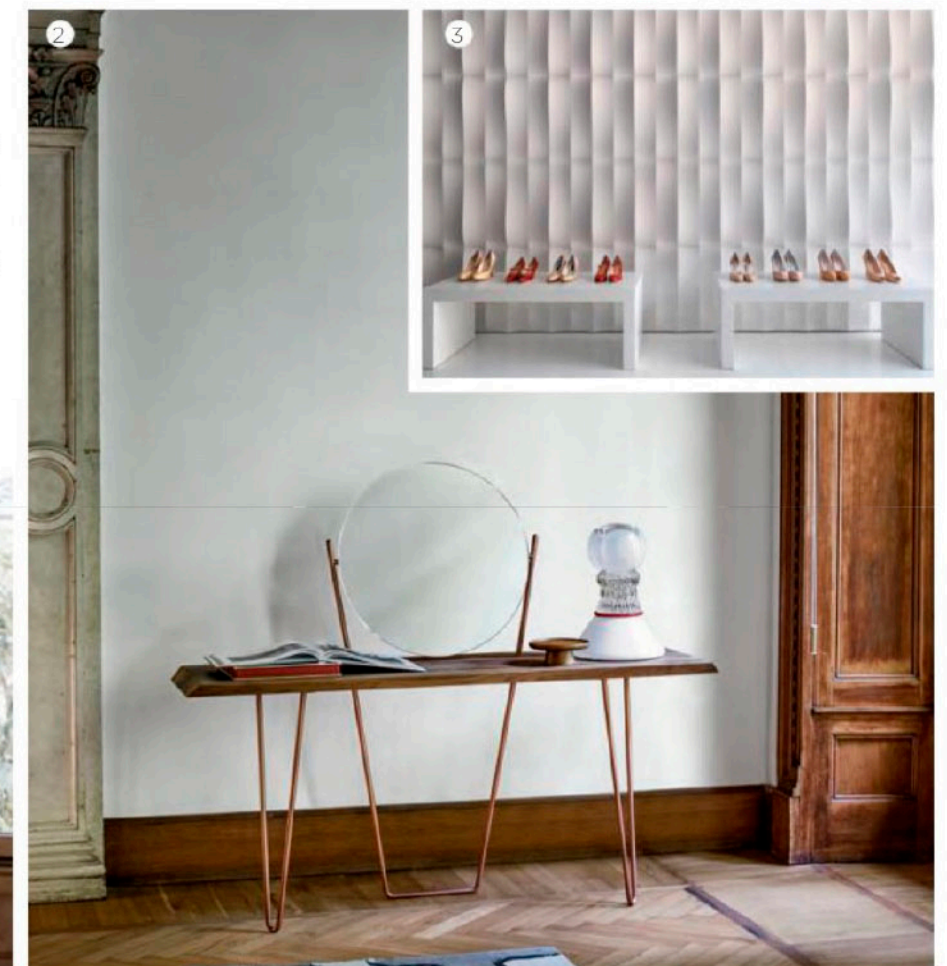
LEO

Where are you most likely to find a Leo? On stage in front of an audience of at least one person. This is the most self-centred of all the signs but, thanks to their positive and cheerful nature, Leos attract others and are always in the limelight.



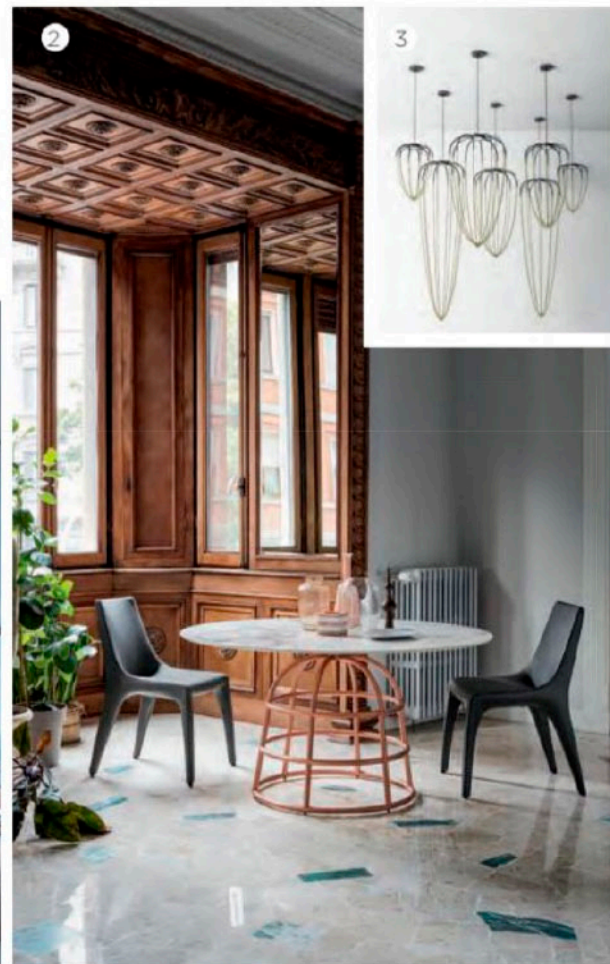
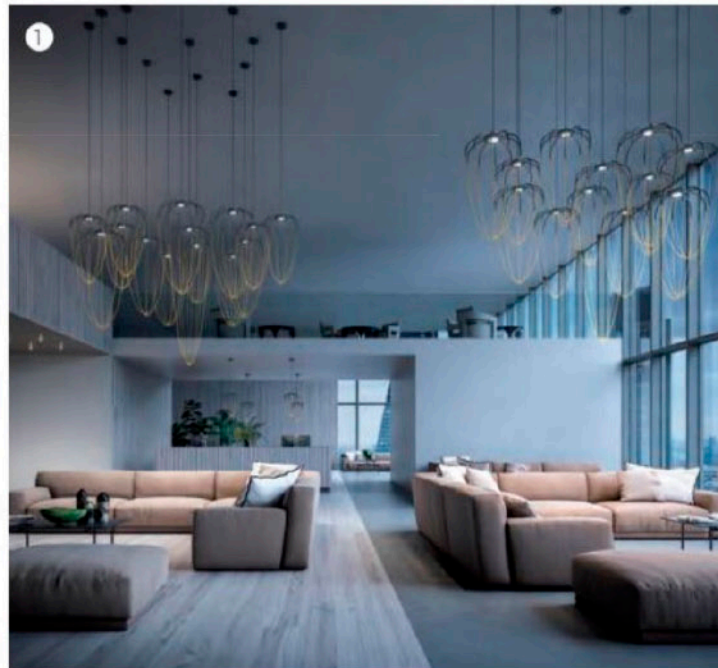
LIBRA

Wherever there's beauty, you'll find a Libra, whether it be a museum, a theatre or a stylish boutique. Vain, sophisticated, sensitive and with a strong sense of what's right. Libras are famous for their charisma and their ability to get on well with others. They swing from one emotion to another, often finding themselves facing hundreds of different crossroads.



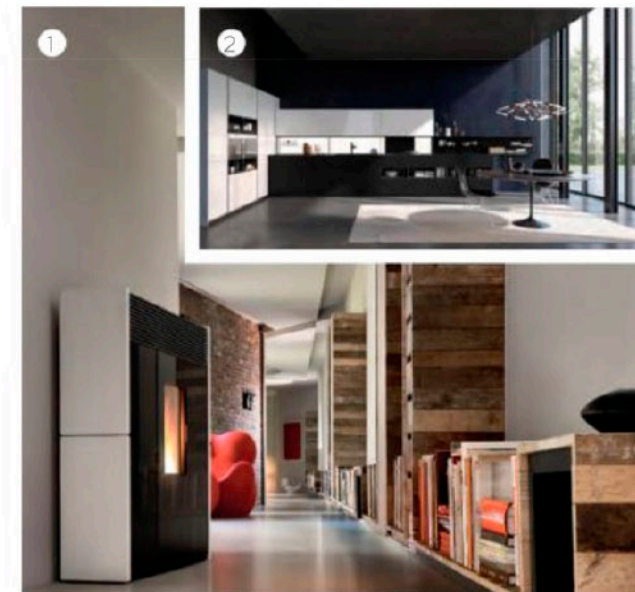
SCORPIO

Love them or hate them, Scorpios do not go unnoticed. Intuitive, sensitive, determined and ready to face anything that life throws at them. Although they may appear cold and reserved, they are actually driven by great passions which may suddenly take over.



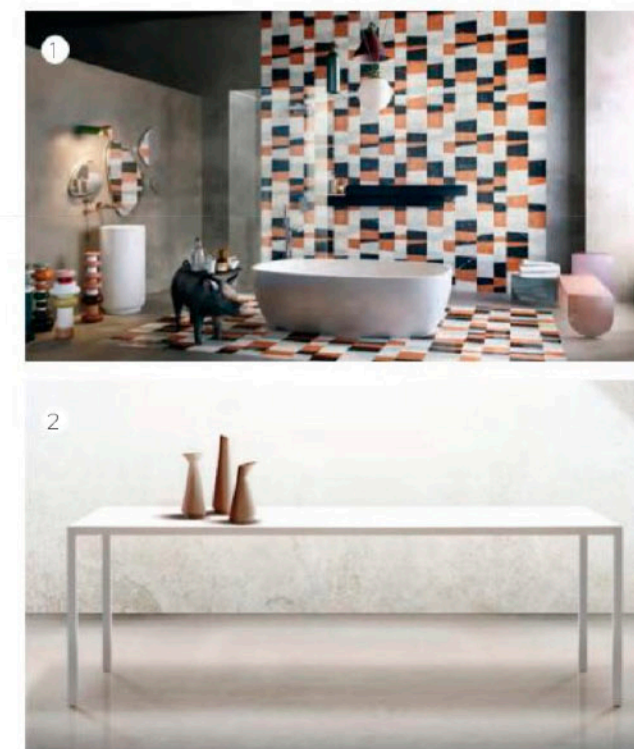
CAPRICORN

Finally, someone who gets straight to the point! A Capricorn is certainly not one to waste time on frivolities. They get down to work, plough on through and reach whatever goal it is they've set their sights on, all within the set time frames. Capricorns are headstrong, wise and as solitary as Buddhist monks, only opening up to very few people, but when they do it's always with plenty of generosity and affection.



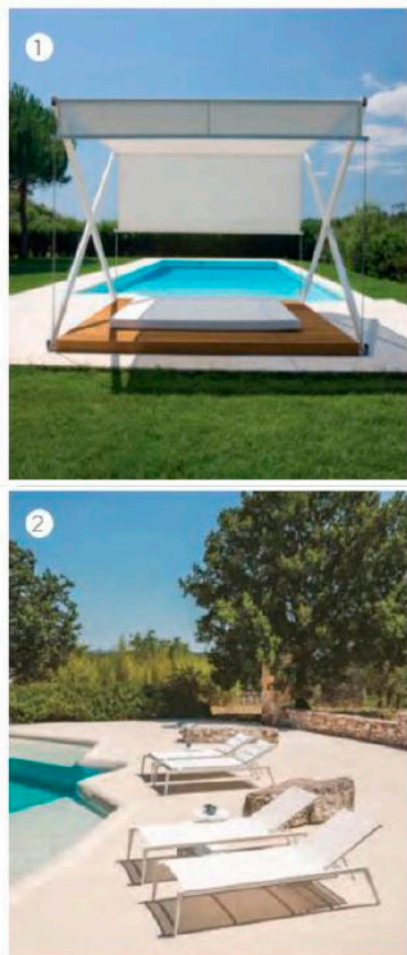
AQUARIUS

Bursting with imagination, unconventional and a little eccentric, Aquarians are friendly and kind: anything new, futuristic and ingenious belongs to this star sign.



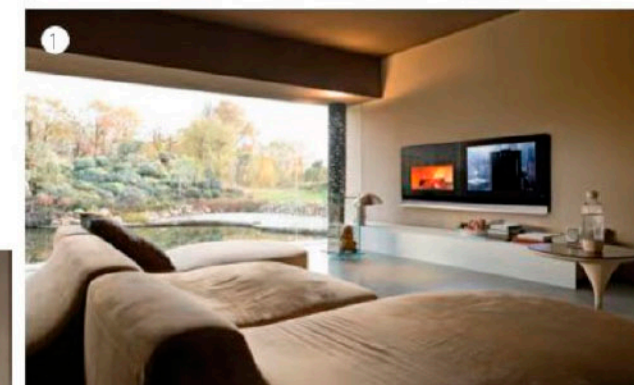
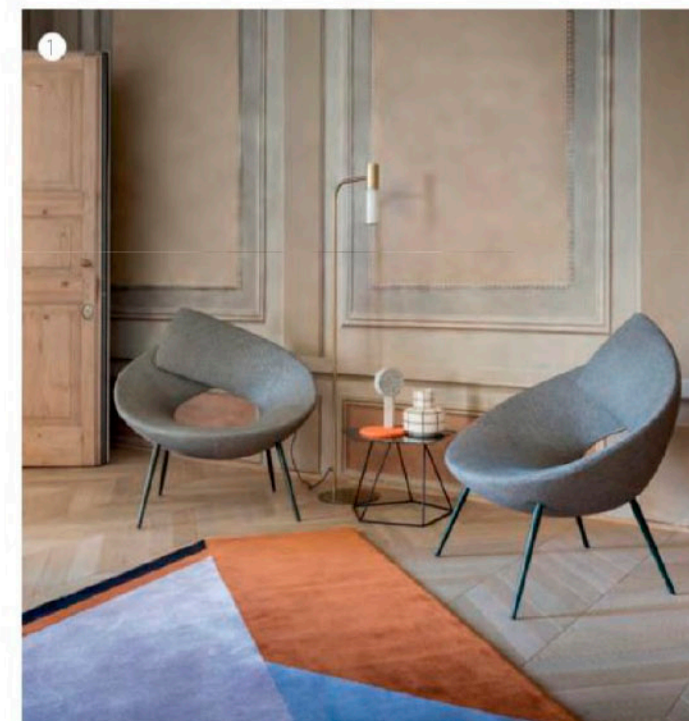
SAGITTARIUS

Sagittarians are real adventurers and love exploring the world. Optimistic, sociable, sincere and generous, Sagittarians dream of a perfect place where they can enjoy life's pleasures, without any complications. They always have something to discover, to do, to embark on: it doesn't matter how it turns out, it's the passion, moving forward and enthusiasm that count.



PISCES

Emotional and romantic, sweet and wistful, incredibly creative and unpredictable. What do they like best? To kick back and relax, watching a film with a cat on their lap and their life partner by their side.



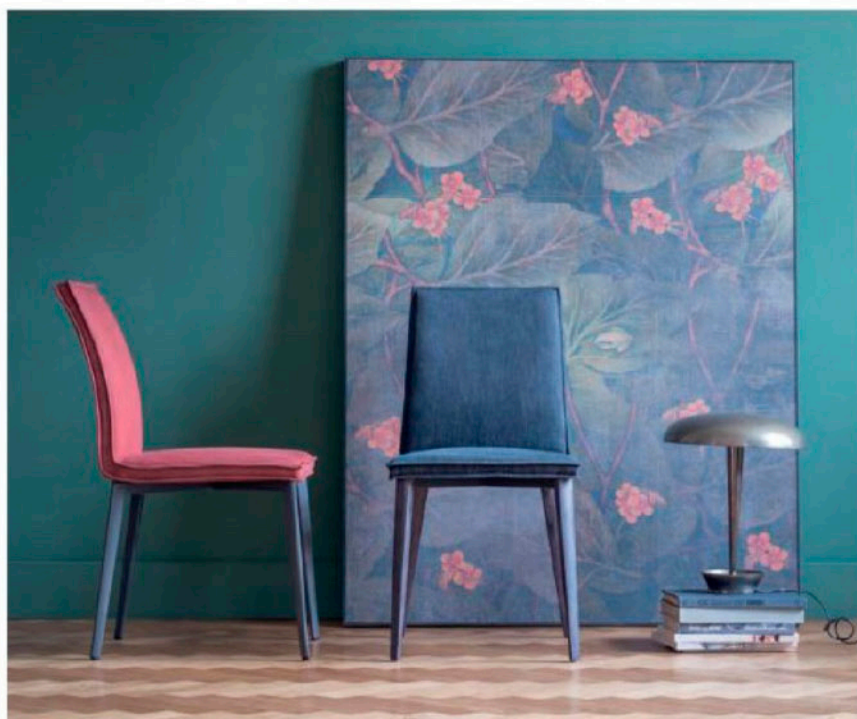
- ARIES:** 1. LithosDesign Muri Di Pietra Traccia 2. Axolight U Light 3. Bonaldo Origami.
- TAURUS:** 1. Bonaldo Skid 2. J. Corradi Country
- GEMINI:** Tubes Origami 2. Bonaldo Pier 3. Axolight Melting Pot. **CANCER:** 1. MCZ Plasma 2. VenetiaStadium Cesendello Photo Courtesy of The Imperial New Delhi 3. MCZ Vivo90.
- LEO:** 1. Lithos Design Luxury 2. Axolight Muse 3. Bonaldo Lovy 4. Pallucco Fortuny Rubelli.
- VIRGO:** 1. Bonaldo Summer 2. Bonaldo Rain.
- LIBRA:** 1. & 2. Bonaldo Coseno 3. Lithos Design Pietre Incise Palladio. **SCORPIO:** 1. & 3. Axolight Alysoid 2. Bonaldo Mass Table. **SAGITTARIUS:** 1. ALL+ XZone 2. Fast Ushuaia 3. Fast Aikana 4. Fast White Sand. **CAPRICORN:** 1. MCZ Linea 2. Complex Linea **AQUARIUS:** 1. Lithos Design Opus Piano Memphis 2. Pallucco Graffiti.
- PISCES:** 1. Bonaldo Lock 2. MCZ Scenario Vivo.

BONALDO

Bonaldo was established in 1936 and it specialises in the production of interior design items: tables, chairs, accessories, sofas and beds. Passion, research, quality: these are the guidelines that have always represented Bonaldo's character. The production takes place entirely in Italy, with an all-Italian taste, and every component is certified for its authenticity and great quality, yet the company has an international spirit which is interpreted by more than twenty-five different Italian and foreign designers. Partnerships with major designers and the ever-new manufacturing technologies implemented allowed Bonaldo to receive prestigious accolades and prizes such as the Red Dot Design Award, the Good Design Award from the Chicago Athenaeum and the iF Design Award.

CHAIRS FOR EVERY SETTING

Bonaldo, Italian company specialized in the production of interior design items, among its collections offers a wide range of chairs suitable for every setting, both contract and private, indoor and outdoor. Here is a selection of chairs ranging from those with leather or fabric upholstery to those entirely realized with plastic material, from the most recent ones to Bonaldo's timeless best sellers.



LIAS CHAIR

Lias is the new chair designed by Gino Carollo.

Lias, expression that derives from the word layers, is the term used in European geology to point out the early Jurassic period, when the Earth's stratification was formed.

Indeed, layers defines the design of this new chair. The border follows the entire silhouette of the seat and of the backrest, with two edges which draw its contour: a well-finished tailoring detail which emphasises the comfort granted by the generous padding.

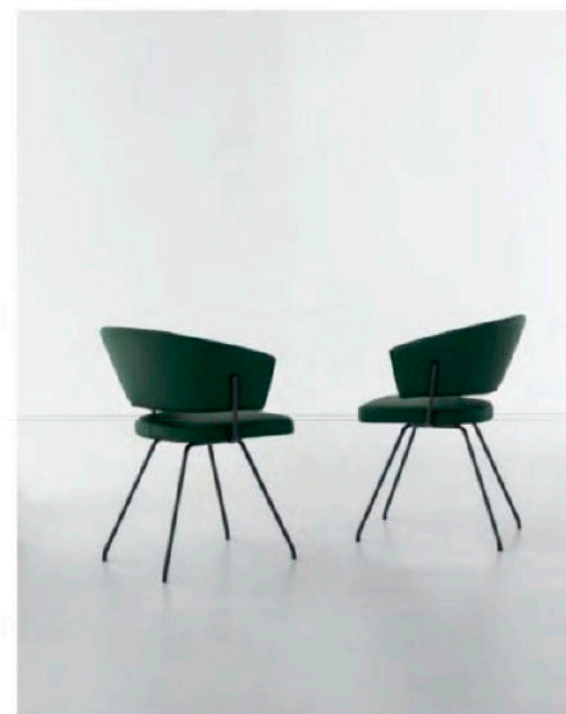
The base is available in metal or wood.

Legs: wood (brushed ash-wood, in natural, anthracite or walnut finish) or painted metal.

Upholstery: fabric, leather or eco-leather cover.

Sizes: L.47 x D.62 x H.90 cm

Available from:
www.bonaldo.it



BAHIA CHAIR

Light graphic marks define the Bahia chair designed by **Mauro Lipparini**.

Curved shapes and simple tubular metal elements create a balanced shape, which is ideal both in residential settings and in smart contract environments (such as offices, waiting rooms, hotel lobbies).

The curved backrest extends forward in a single line, allowing the arms to rest freely while enveloping the user's back for maximum comfort.

Frame in painted metal, chrome, copper or matt brass finish.

Upholstery in leather, eco-leather or fabric

Sizes: L.59 x D.57 x H.78 cm

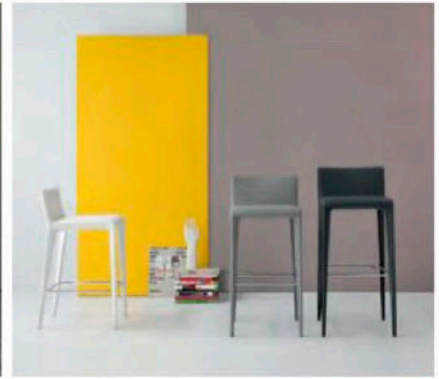


FILLY CHAIR

Filly, a family of five seats that are entirely upholstered with removable covers, is designed by Bartoli Design and is the result of formal and technical research carried out with a view to developing a versatile product in which comfort, functionality and styling are complementary attributes. Shapes and dimensions vary in order to satisfy every requirement, including the need to combine different versions in the same setting: Filly, with traditional dimensions; Filly up, with a higher back for improved comfort; Filly large, with a wider seat; Miss Filly, with armrests; Filly too, the stool.

Upholstery: leather, eco-leather or fabric.

Legs: upholstered or with visible metal legs mat painted in many colors.



GIUSEPPINA CHAIR

In creating Giuseppina, designed by Dondoli e Pocci, Bonaldo was inspired by the current trend in which reassuring, classic shapes are reinterpreted and modernised, thanks to contemporary materials, production techniques and formal details.

Giuseppina is therefore a modern, ironic reinterpretation of the traditional kitchen chair, whose shape is used in this chair. It is transformed into something new and up to date through the types of material used and the six colours in which it is offered: non-transparent white, black and red, transparent or semi-transparent smoked and violet.

Its mix of tradition and modernity brings Giuseppina out of the restrictive environment of the kitchen, from which it takes its inspiration, to adapt to others, for example terraces and gardens or contract use.

Frame: polycarbonate, through gas injection moulding in a single piece
Sizes: L46 x D53 x H84 cm